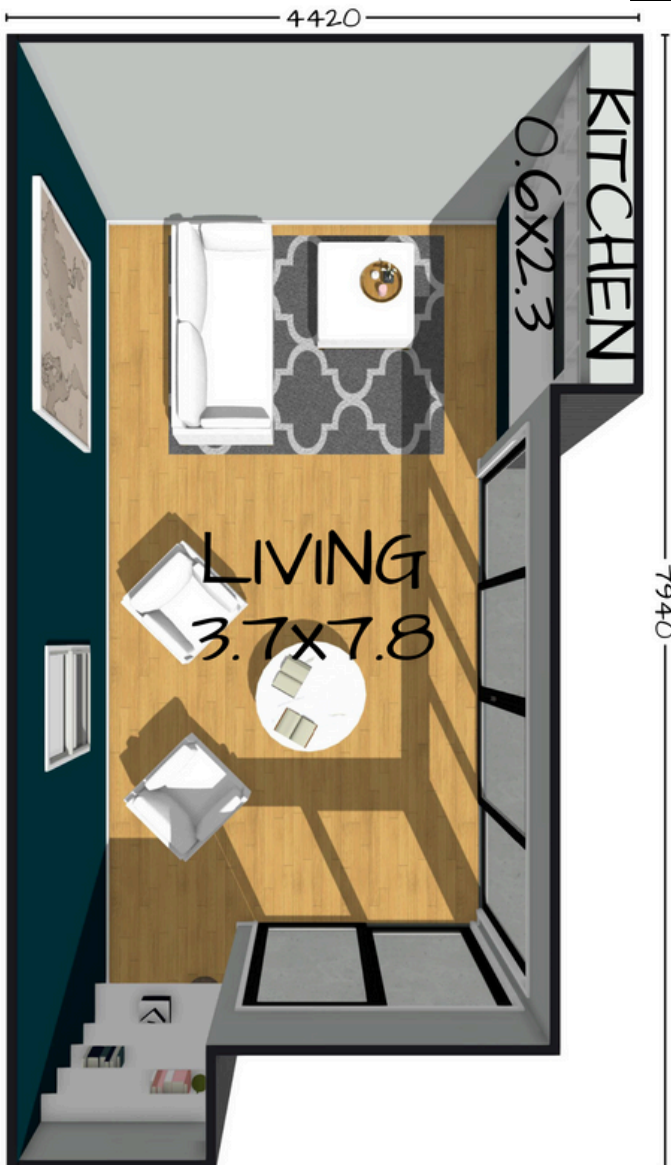


# THE STUDIO POD



30m<sup>2</sup> LIVING AREA    5m<sup>2</sup> DECK AREA



## DIY KIT PRICE - \$33,580

- +Pre Assembled Steel Wall Frames & Roof Trusses
- +Roof & Ceiling Battens
- +2.55mH Ceilings
- +Sliding Windows & Doors
- +CGI Roof Sheets, Fascia & Gutters
- +Horizontal CGI Wall Sheets & Trims; **or**
- +HardiePlank 230mmW FC Weatherboard
- +Deck Roof
- +C1 Cyclone Rating
- +Engineering Design Certificate (Form 15)
- +Fastener Kit
- +Delivery - 150km radius of Bundaberg Central

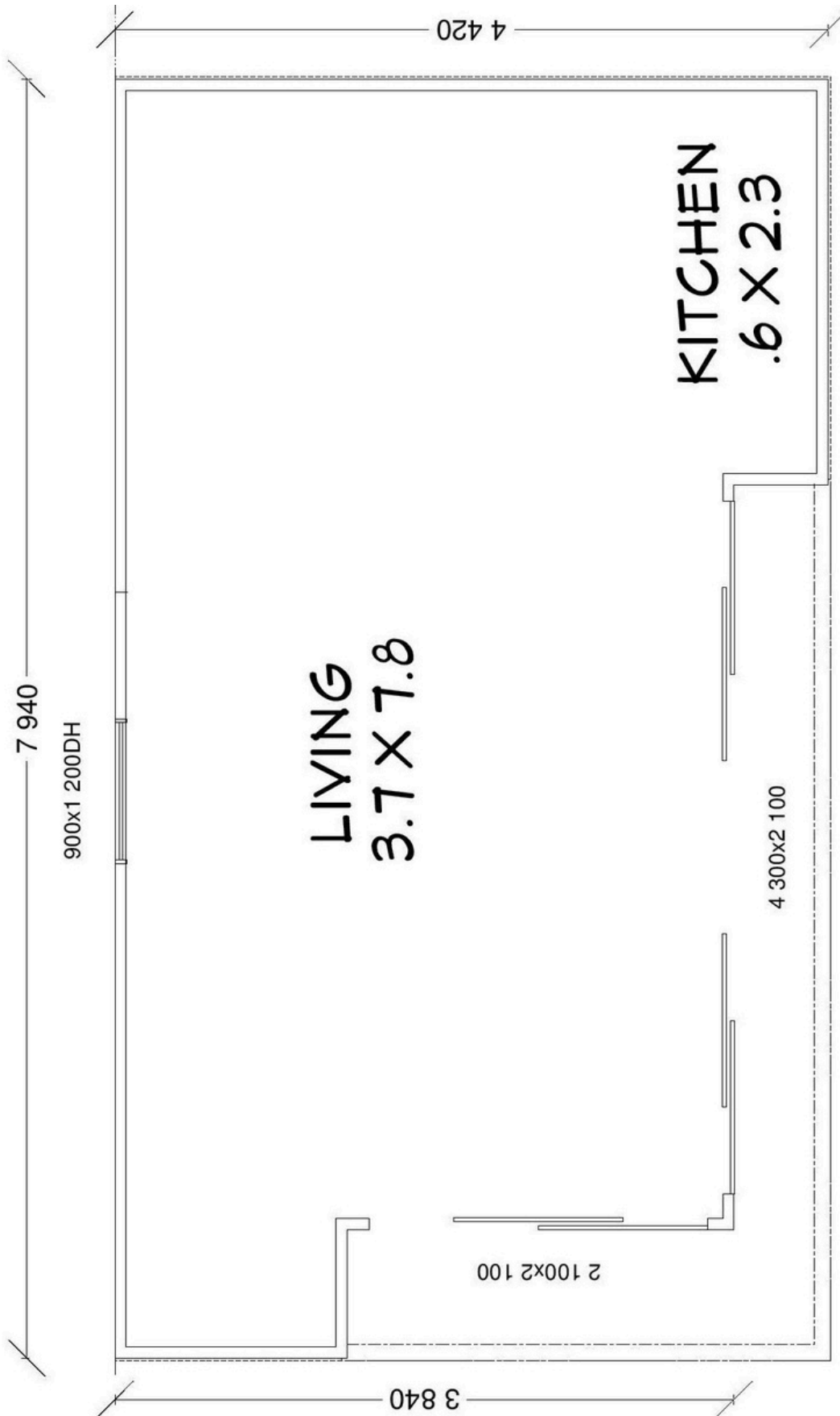
## STEEL FLOOR SYSTEM - \$6,915

- +Steel C-Purlin Bearers (incl. Deck)
- +Steel C-Purlin Joists (incl. Deck)
- +Yellow Tongue Flooring Throughout

## INTERNAL LINING KIT - \$7,580

- +Plasterboard incl. all plaster products
- +Skirting & Architraves
- +90mm Cove Cornice
- +Thermal Break
- +External Wall Insulation
- +Roof Blanket

# THE STUDIO POD



Floorplan has been prepared for illustrative purposes and should be used as a guide only. Plans are not to scale and all images, renders, and inclusions shown are indicative only. Colours, furniture, cabinetry, tiles, paint, PC items, floor coverings, electrical, plumbing, vehicles, fencing, paving, landscaping, and pools are artists impressions only, and are not included. Refer to package inclusions for full details. Pricing and availability is subject to change without notice. © Copyright Frame Steel Pty Ltd 2013.